



NEWSLETTER

2018 ICIS Congress Cologne, Germany

The 2018 ICIS Delegates Assembly and Congress will begin on Sunday 17 June with the all-important Networking Tour of architecture and historic features of Germany's historic town of Cologne (Köln). This will be followed by three intensive days of presentations and discussions focusing on the connectivity of information across construction specifications, classifications, standards, cost information, product information, sustainability, BIM, digital engineering, asset management, and education.



Cologne (German: Köln, Colognian: Kölle) is the largest city in the German federal State of North Rhine-Westphalia and the fourth-largest city in Germany (after Berlin, Hamburg, and Munich). It is located within the Rhine-Ruhr metropolitan region, one of the major European metropolitan areas, and with more than ten million inhabitants, the largest in Germany. Cologne is 45km southwest of North Rhine-Westphalia's capital of Dusseldorf and 25km northwest of Bonn.

Cologne is located on both sides of the Rhine River, near Germany's borders with Belgium and the Netherlands. The city's famous Cologne Cathedral (Kölner Dom) is the seat of the Catholic Archbishop of Cologne. The University of Cologne (Universität zu Köln) is one of Europe's oldest and largest universities.

Cologne is one of the oldest large German cities and its name dates back to Roman times. The Romans founded the Ubii village on the Rhine in 50AD and named it "Colonia." The imperial governors of Rome resided here, and soon the town grew into one of the most important trade and production centres in the Roman Empire north of the Alps. The inhabitants left behind many traces of their culture in the town centre. Today, Cologne is still a favoured destination thanks to its central location and is one of the most important traffic hubs in Western Europe.

Classification, Identification, and BIM

This latest ICIS report, available at www.icis.org, confirms that a number of existing national classification systems are useful to organise various types of information for certain parties in some of the processes in the construction lifecycle. However, it also questions if currently used classification is optimal for supporting the collaborative process with BIM and all the parties involved.

With the revision of ISO 12006-2, the focus has changed from not only classification according to purpose, but also creating a common language and structure of information, referencing project specific objects working with BIM.

These issues are discussed in this report in order to generate a debate of what will be necessary to support a fast-developing BIM practice that combines information from several sources and software platforms. Much adaption of existing classification systems for BIM is happening. The classification for BIM potential of the revised ISO 12006-2:2015 edition, in combination with other relevant international standards, has still to be completed.

This report is written for persons and individuals in the construction sector. On an expert level, it is occupied with and discusses the use, importance, and nature of classification and identification in and with BIM.

ICIS Secretariat

Address: Sumavska 33
61254 Bruno
Czech Republic

Phone: +420 549 133 348

Email: pospisilova@urspraha.cz

Web: www.icis.org

Member Profile

GAEB, Germany



Gemeinamer Ausschuss Elektronik im Bauwesen. www.gaeb.de

The work results of GAEB are published by DIN Deutsches Institut für Normung e.V. These provide the preconditions for the tender, award and billing processes in construction works (Ausschreibung, Vergabe und Abrechnung - AVA).

The focus of GAEB is the production and revision of:

- ▶ Standardised texts for the description of construction works for new buildings, renovation, and maintenance (STLB-Bau). STLB-Bau is a database-oriented textual system.
- ▶ Standardised texts for the description of constructions for term contract work (STLB-BauZ). STLB-BauZ supports recurring maintenance work in buildings through standardised texts that are specially coordinated with this area.
- ▶ Rules and standards for electronic data exchange and setup of bills of quantities (GAEB DA). Through the "Aufbau Leistungsverzeichnis" (setup service description) and the "dv-technisches Schema XML" (dv-technical scheme XML), GAEB DA provides the normative interface for the exchange of professional information between parties involved in construction.
- ▶ Description of the proceedings for the electronic amount and construction invoicing (GAEB-VB). In GAEB-VB, regulations for the invoicing of construction works, as well as geometric solutions for typical invoicing tasks are developed, updated, and harmonised. The goal is to independently gain the same results from the same initial data, at different places.

President's Column

ICIS provides NATSPEC with something that I cannot gain anywhere else: contacts and information at a global level dealing with the multiple construction information topics interlinking construction specifications, classifications, sustainability, and BIM. Congress is especially important in forging strong relationships, providing me with access to additional information between Congresses. Additionally, it gives me insights into the other issues of cost management, facilities management, manufactured products, construction processes, and project management. This adds incredible value as no single sector of the industry works in pure isolation.

Rather than attend multiple international forums, I attend Congress to hear, discuss, and interrogate those issues with my peers. This is only possible face-to-face.

Additionally, we have the opportunity to undertake joint technical projects with some or all ICIS Members outside of Congress. A key business tool, gained through ICIS, is the network of good relationships that facilitate the sharing of information, ideas, and contacts that shape my organisation. One example is NATSPEC's development of the Australian National BIM Guide, based on the US Department of Veteran Affairs guide. This was facilitated through an ICIS relationship. The Australian BIM Guide then acted as the basis for the National BIM Guides for both New Zealand and South Africa, and is also shared with the China BIM Union.

Whilst I was once sceptical of the value of ICIS membership, the returns gained from membership and attending Congress have far exceeded the time and cost invested.



*(Left to right):
Newly elected ICIS President Richard Choy (NATSPEC, Australia),
Company Secretary Barbora Pospíšilová (URS Praha, Czech Republic)
Treasurer Rolf Huber (Construction Information Limited, New Zealand)*

ARCOM's SpecBuilder Cloud

ARCOM has released its cloud-based editing tool for MasterSpec, 'SpecBuilder Cloud'. SpecBuilder Cloud is an application for creating, editing, and collaborating on project specifications. As part of the ARCOM One® platform, with SpecBuilder Cloud you can create, edit, and review specifications from virtually anywhere, using an internet browser. SpecBuilder Cloud allows you to collaborate with other members of your team, including owners, consultants, and contractors.

All Federal projects including US Navy, Army Corp, Air Force, and other agencies can now provide BIM-integrated specifications with Autodesk Revit, with ARCOM's new library, to support the Unified Facilities Guide Specifications (UFGS). Agencies like the Veterans Administration and NASA can now fulfil their desire for more integrated building designs with specification data.

The BIM Library Survey Project:

This project is progressing as we identify survey participants in both large and medium sized A/E firms in the US. We currently are actively looking for additional participation from around the globe. In addition to collecting participants, we are also formulating an early listing of survey questions for review by the ICIS members, and looking into an appropriate survey platform.

If you would like to participate in this survey and obtain access to an extended report of the results please contact Gilles Letourneau at ARCOM, GLetourneau@arcomnet.com.

NZ Award Finalist

Masterspec, New Zealand, is thrilled to have been selected as a finalist in the AUT Business School **2017 Excellence in Business Support Awards**. The Awards recognise and celebrate organisations and individuals that deliver quality products and services to help small, medium, and large businesses maximise their potential. Now into its twelfth year, the Excellence in Business Support Awards are the only national performance measure for New Zealand business support organisations.



AUT BUSINESS SCHOOL
EXCELLENCE IN BUSINESS
SUPPORT AWARDS

2017 FINALIST

BUSINESS < \$5M T/O

Masterspec

CRB and coBuilder Agreement

The Swiss Research Centre for Rationalization in Building and Civil Engineering (CRB) and coBuilder signed an agreement outlining future cooperation plans. The leading standardisation body in the Swiss construction and real estate industries, and the leading provider of digital data services for the Norwegian and UK construction industries will be working together to deliver a digital platform that will enable the entire Swiss construction industry to benefit from a common digital construction data context.

Establishing a digital data-based Swiss construction context

CRB plans to use coBuilder's existing mechanism of structuring construction product data through Product Data Templates to provide a Swiss-specific platform, which is intended to go beyond the existing development. coBuilder and CRB aim to set up a Swiss-specific process of creating Product Data Templates (PDTs), and establish it as the national Swiss standard. Construction product manufacturers will be able to access the Swiss PDTs and create standard-based product data for distribution to the market through the goBIM platform. Working in cooperation with national and cross-country partners in the area of standardisation, the organisations will ensure that the SBS Tool is developed according to not only best practice, but also to the specific needs of the Swiss industry.

International 5D BIM conference in Prague

In 2017, URS PRAHA hosted an international conference about development and perspectives of BIM in Prague, the Czech capital.

Experts from Norway, Finland, Poland, Slovakia, and the Czech Republic focused their presentations mainly on 5th dimension of BIM – cost estimation and financial planning. The conference compared the world status of both currently used solutions and future possibilities in this area to the Czech construction environment. The main goal was to explain new approaches for practice and changes, which BIM implicates to the new role of cost estimators.

BIM will be a base methodology of public procurement in the European construction market. Implementation of BIM was approved by Czech government in November 2016, with the Czech Ministry of Industry and Trade assigned the task of creating an implementation plan. According to this document BIM should be compulsorily used for large public construction orders from 2021.

MOLIO takes form in Denmark

Danish associations bips and Byggecentrum (Danish Building Information Centre) have merged to become MOLIO - Construction Information Centre. MOLIO is now an independent self-established foundation with:

- The mission of being the central Danish organisation, which through development and co-creation will communicate the right knowledge at the right time to the companies within the construction industry.
- The vision of contributing substantially to the development and digitisation of construction, infrastructure, and operation of the built assets for the benefit of the companies and society.

Key goals for the new organisation include to:

- Embrace the whole built environment (buildings, infrastructure, and operation of the built asset).
- Develop BIM functionality through tools, working methods, and content based on standards and user needs.
- Facilitate a network of user groups for companies to express their user needs and participate in the development and implementation processes.
- Be a participant in international fora and within international and European standardisation.
- Facilitate and expand the Danish buildingSMART forum and its network activities and development initiatives.
- Implement sustainability content in the context of use for BIM (for specifications, building models, data, simulations, and validation).
- Fulfil its mission through national and international partnerships, and cooperation.

MOLIO is currently working on:

- Establishing a new object-oriented structure for the specification to make it BIM compatible.
- Linking pricing data with specifications and property data through classification.
- Establishing a digital platform for all tools in a common structure, based on CCS classification and identification.
- Participating in CEN/TC 442— standardisation on structure for handling of properties, product data templates, level of information needed.
- Participating in ISO/TC 59/SC 13— standardisation on Information management and terminology.
- Participating in IEC/ISO standardisation on classification and use of identification in construction.
- Establishing a new website and marketing of tools and implementation, education and learning.

Norwegian Home Builders' Association

Boligprodusentene (NHBA) hosted a conference on BIM and digitalisation on September 6-7.

The conference joined all the major home builders companies and most software companies that provide BIM and other digital solutions to the industry.

It was good to see all the innovative solutions available, and demonstrated that sharing information and ideas is much more productive than remaining in isolation.

Geir Johansen of Norconsult reported that collaborating is the new trend, and in his view BimSync by Catenda is one of the more innovative solution in that area. It is based on open standards, and shares its API's with anyone interested. Visit www.bimsync.com.



Lervik Brygge, Stavanger, is one of Norway's new development projects.



NATSPEC & China BIM Union

In August 2017, NATSPEC hosted Professor HUANG Qiang, Chairman of the China BIM Union, for a historic signing of a Memorandum of Understanding with NATSPEC. Through this agreement a dialogue will be maintained with China, ensuring that future opportunities and progression for BIM and digital engineering in Australia are encouraged and accommodated.

Left to right: Professor HUANG Qiang with Richard Choy, CEO NATSPEC

BIM Library Consortium, Japan

The BIM Library Consortium (BLC) activities in Japan entered its third year this September.

For the past two years, the building committee of BLC referenced several other countries' BIM object libraries. Now, the specific information required for the object, defined by the creator and the generic object has been defined, and the draft specification for component objects such as windows and doors has been created.

BLC has reported that the building division will next draft a specification for layered type objects, such as floors and walls.

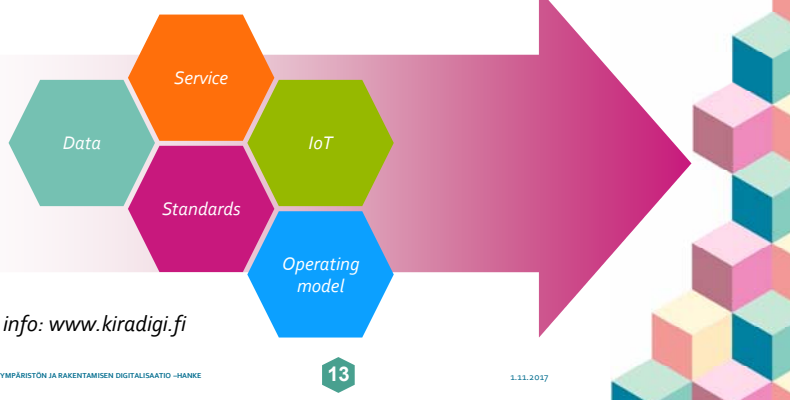


Kick off meeting of the Fundamental Issues Committee, BLC

Leap into Digitalisation

The Finnish construction sector is now taking a giant leap into digitalisation through a large funding program. The funding program will run until the end of 2018 with a budget of € 16 million.

Themes of the experimentations



NATSPEC is proud to be on the Executive Committee of the Australasian BIM Advisory Board (ABAB). Leaders from government, industry, and academia are partnering to provide leadership on the adoption of BIM and Project Team Integration (PTI). The ABAB aims to provide a coordinated approach to the development of BIM practices, standards, and requirements. New technologies and processes in BIM can lead to increased productivity and improved asset management in the built environment across Australasia through collaboration, education, innovation, and simplification. Visit www.abab.net.au.