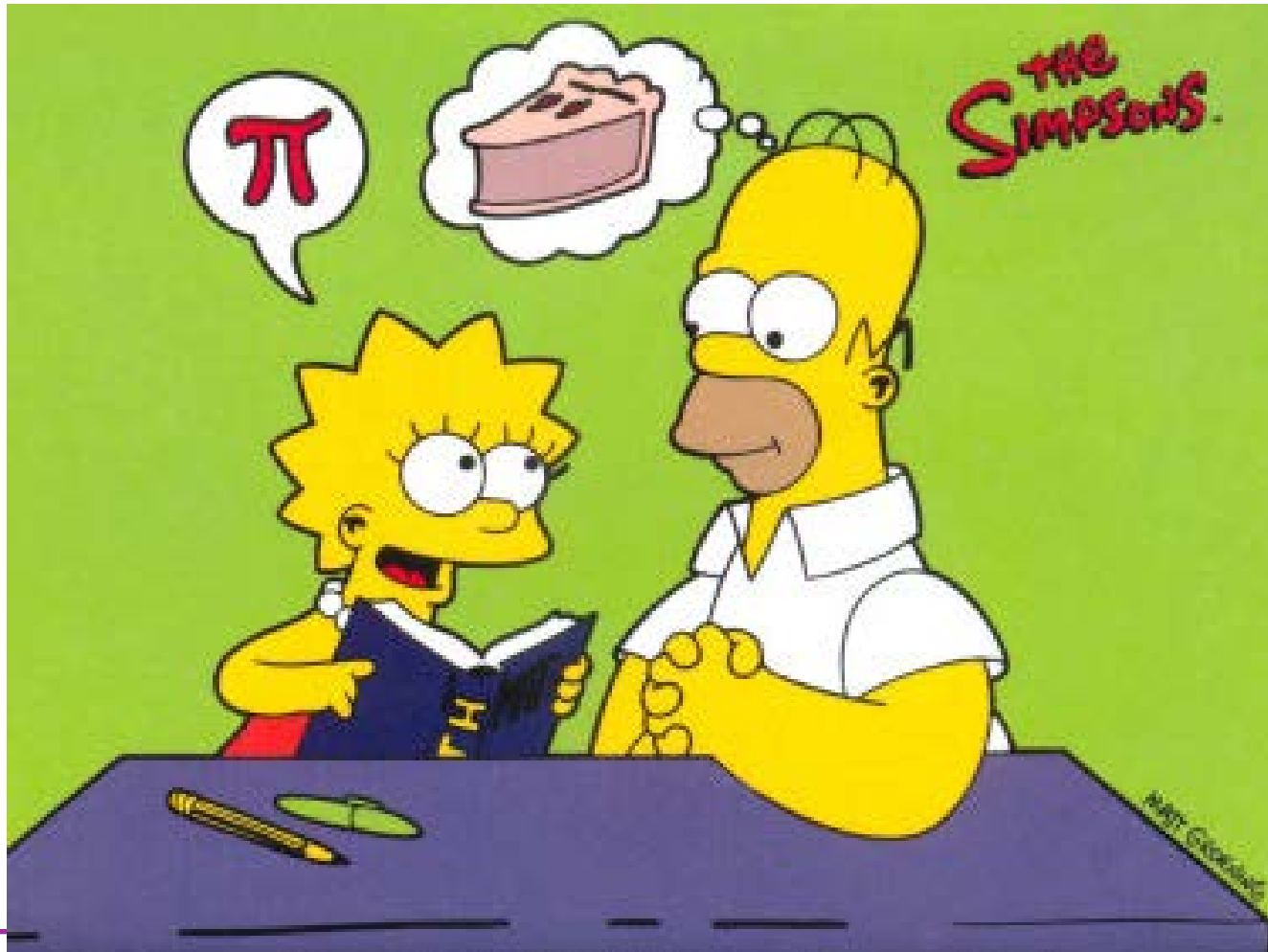


# BuildingSMART Data Dictionary (IFD Library, Barbi/Lexicon)

By David Watson, CET, FCSC, CSP  
2014-06

# CAD-Specs

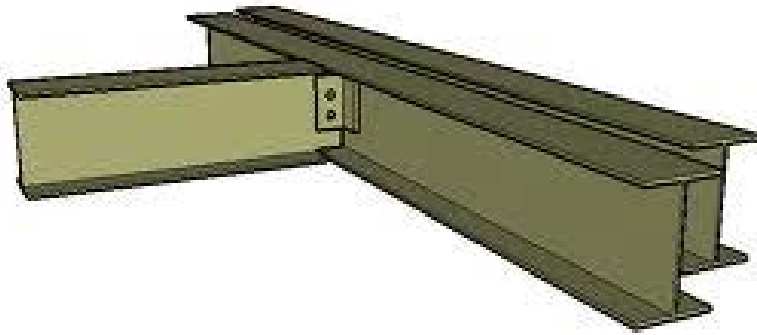
## The fundamental Problem



# CAD-SPECS

## THE FUNDAMENTAL PROBLEM

BEAM



than



Spade

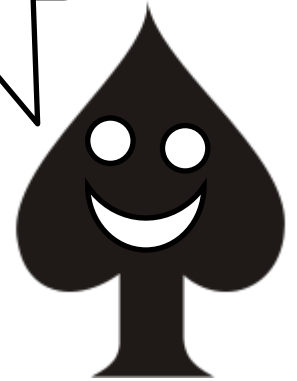


Shovel

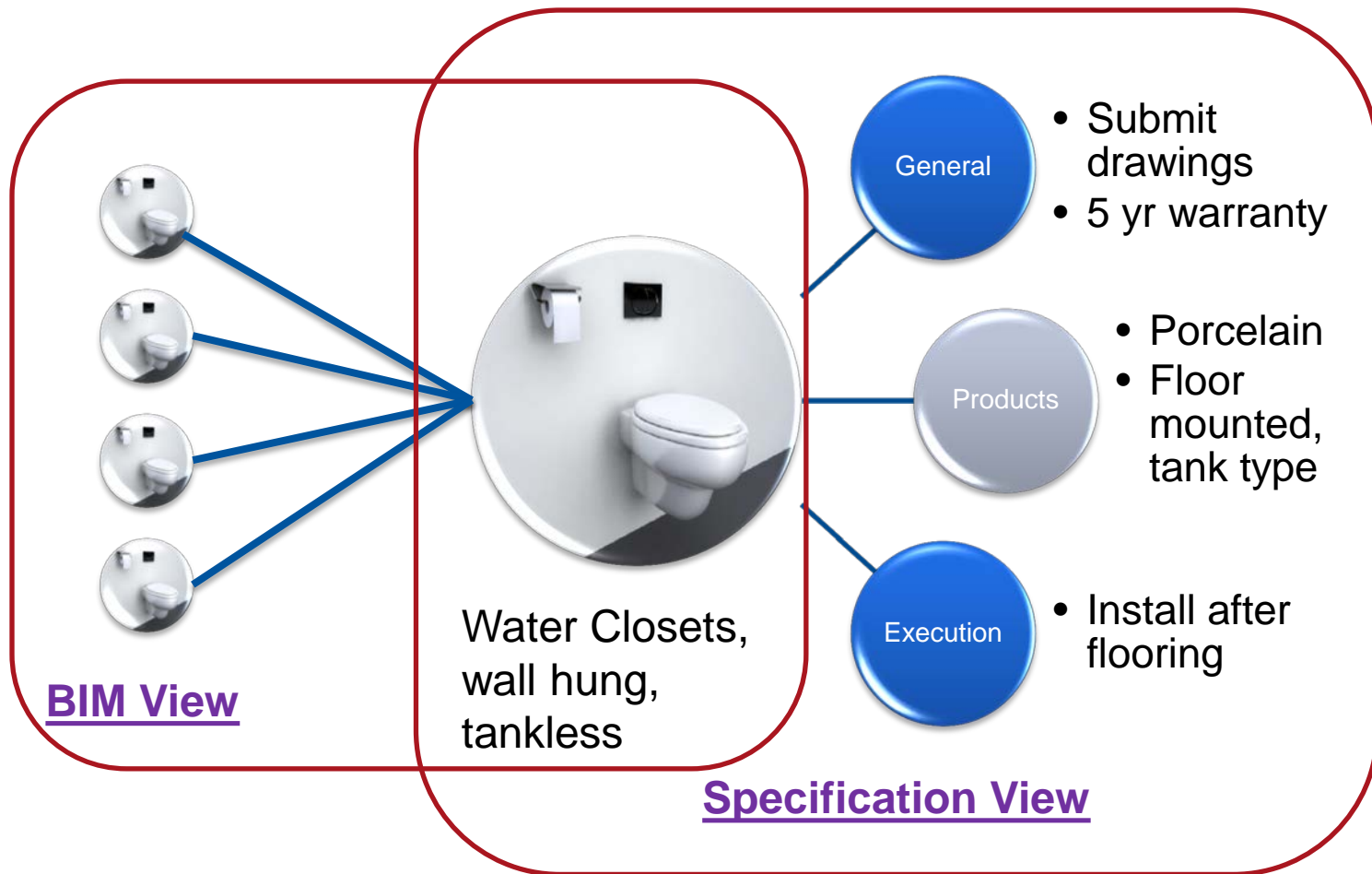


Earth  
relocating  
implement

I actually prefer  
to be called  
Steve



# objective



# bSDD – How does it work?

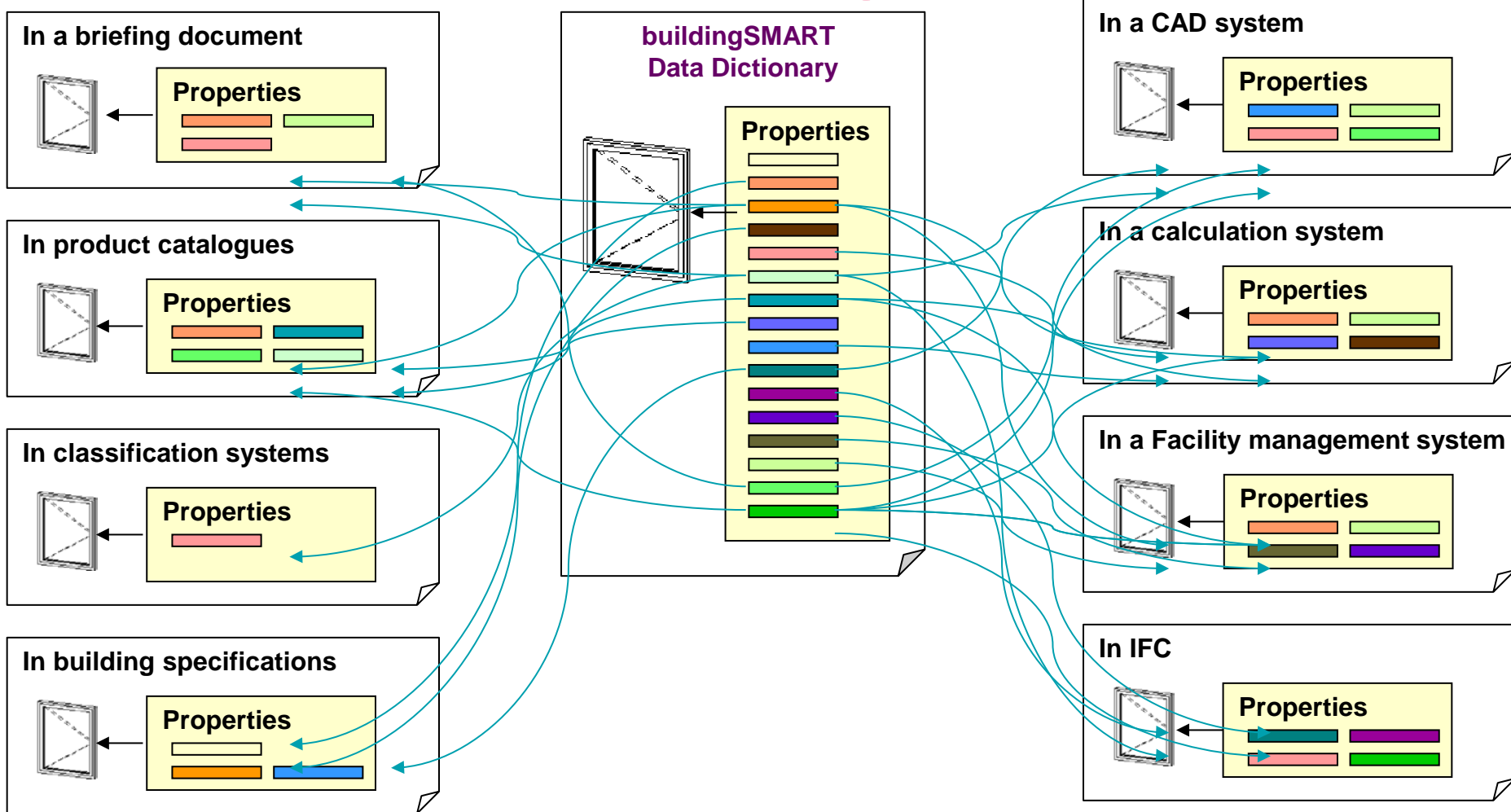


- CAD (BIM) Model
  - bSDD GUID = xyz
  - Name = “ceiling panel”
  - Length =
  - Width =
  - Thickness =
  - Geometric position (x, y, z)
  - Quantity



- Data Source (eg. master specification)
  - bSDD GUID = xyz
  - Name = “acoustic panel”
  - STC Rating =
  - Flame spread resistance =
  - Install into suspended t-bar
  - Submit shop drawing

# bSDD / IFD mapping mechanism



# How it Works

Fire resistance integrity

?? = ??

Fire rating

System performance

**nbs Fire performance**

- Standards: To BS EN 14600.
- Fire resistance:
  - Standard: To BS 476-22.
  - Integrity: 30 minutes.**
  - Insulation: 30 minutes.
  - Radiation: To BS EN 13501-2, 30 minutes.
- Smoke control:
  - Ambient temperature smoke: To BS 476-31-1.
  - Medium temperature smoke: Unclassified.
- Surface spread of flame: To BS 476-7, Class 1.
- Conformity: Certification by accredited third party certification body.

Type Properties

Family: nbl\_Door\_Int-DbI-Vsn-Pnl-02 Load...

Type: 1710X2100 Duplicate... Rename...

Type Parameters

Parameter	Value
FrameProfile	
Configuration	Pair
NBSReference	25 50 20 110
NBSDescription	Doorset system
Keynote	25 50 20 110
IssueDate	12/03/07
Help	www.nationalbimlibrary.com
Description	Internal double door with 2 vision
Assembly Code	
Model	
Manufacturer	
Type Comments	
Assembly Description	
Type Mark	146
Fire Rating	30 min
Cost	
Workset	Family : Doors : nbl_Door_Int-DbI
Edited by	
OmniClass Number	
OmniClass Title	

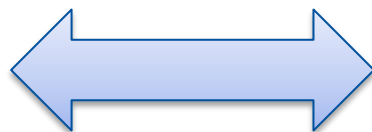
<< Preview OK Cancel Apply



# How it works

## 310 Infill panel

- Form: [...]
- Edge profile: [...]
- Size (width x length): [...]
- Thickness: [...]
- Face finish: [...]
- Face colour: [...]
- Face pattern: [...]
- Sound absorption coefficient: [...]
- Light reflectance value: [...]
- Thermal conductivity: [...]
- Recycled content: [...]
- Weight: [...]



## 310 Infill panel

- Plateformat: [...]
- Kantutforming: [...]
- Platestørrelse: [...]
- Tykkelse: [...]
- Overflatebeskaffenhet: [...]
- Farge: [...]
- Overflatemønster: [...]
- Lydabsorpsjonsfaktor: [...]
- Refleksjonsfaktor: [...]
- Varmemotstand: [...]
- Resirkulert innhold: [...]
- Nettovekt: [...]

# How it works



System performance

**Fire performance**

- Standards: To BS EN 14600.
- Fire resistance:
  - Standard: To BS 476-22.
  - Integrity: 30 minutes.
  - Insulation: 30 minutes.
  - Radiation: To BS EN 13501-2, 30 minutes.
- Smoke control:
  - Ambient temperature smoke: To BS 476-31-1.
  - Medium temperature smoke: Unclassified.
- Surface spread of flame: To BS 476-7, Class 1.
- Conformity: Certification by accredited third party certification body.

Type Properties

Family: nbl\_Door\_Int-DbI-Vsn-Pnl-02 Load...

Type: 1710X2100 Duplicate... Rename...

Type Parameters

Parameter	Value
FrameProfile	
Configuration	Pair
NBSReference	25 50 20 110
Description	Doorset system
Manufacturer	25 50 20 110
Release Date	12/03/07
Help URL	www.nationalbimlibrary.com
Description	Internal double door with 2 vision
Assembly Name	
Model	
Manufacturer	
Type Comment	
Assembly Description	
Type Mark	146
Fire Rating	30 min
Cost	
Workset	Family : Doors : nbl_Door_Int-DbI
Edited by	
OmniClass Number	
OmniClass Title	

<< Preview OK Cancel Apply



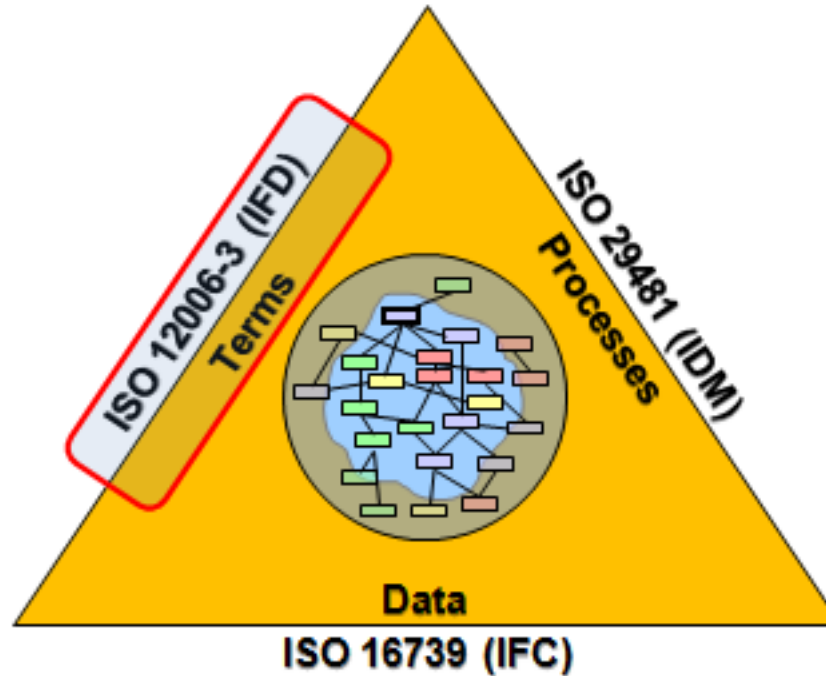
# BSDD – What else does it do?

- Accessible via software/internet (cloud)
- Manages synonyms, multiple languages
- Classifies
  - Any classification, as long as it resides in bSDD
- Gets specialization hierarchy
  - Super-types, sub-types
- Get lists of components
- Get lists of properties
- Get lists of relevant standards
- Select from many ‘contexts’
  - (a context is a set of relations)

# BSDD - Applications

- No. 1: Access BIM Data Stores
  - Spec database
  - Product information
  - Costing
  - ...
- Translate
- Classify

# The Buildingsmart model



# The BuildingSMART Model

- IFC:
  - The 'transport' medium through which data is transmitted
- IFD:
  - The 'meaning' of the data being transmitted
- IDM:
  - The 'process' (which part is being sent, what is it, who sent it to whom, and when)

# bSDD - Status

- API operational
- Pilot Projects:
  - Approximately 15 participants (at least 10 countries)
  - N.A./Europe: Weekly
  - N.A./Australasia: Weekly
  - Subjects: Ceiling tile, VAV Terminal box
  - Developing content management guidelines

# BSDD Status

- Customers:
  - CB/NL: Dutch, available to all Dutch users
  - Cobuilder: NO company, storing product data
  - IFD Sign-on (NOBB, ???)
- Serious Interest
  - Saint Gobain
  - NBS/RIBA and bsUK (UK)
  - AIMCC (France)
  - University of Austria



# Check it out!

- <http://bsdd.buildingsmart.org>