

The logo for masterspec, featuring the word "masterspec" in a bold, lowercase, sans-serif font. The "master" part is white and the "spec" part is a lighter gray, all contained within a solid black rectangular box.

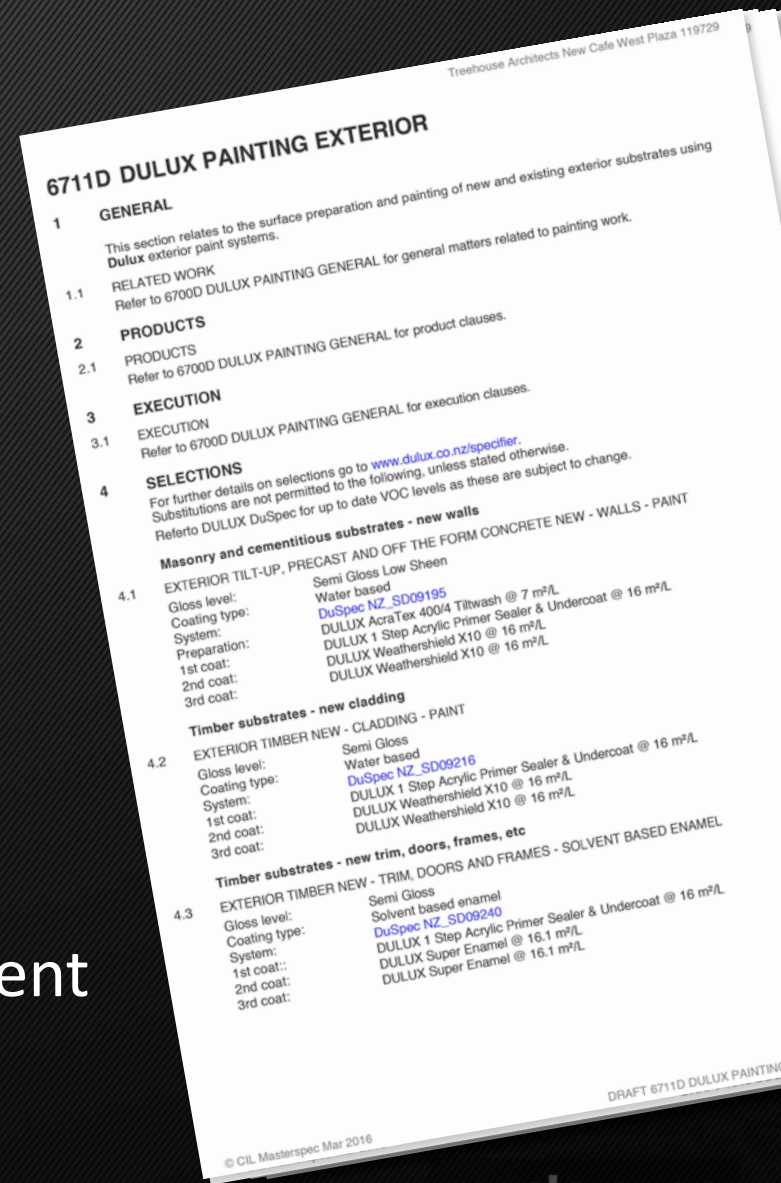
masterspec

Online Specification Platforms

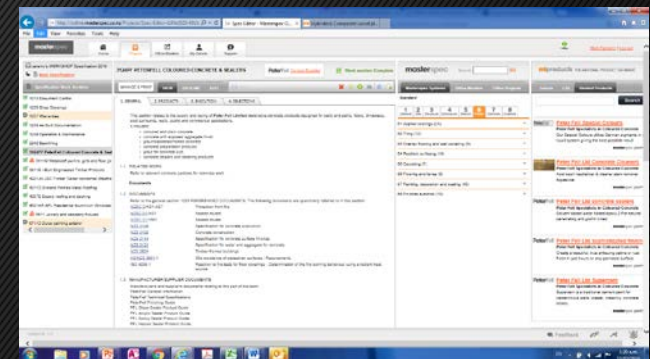
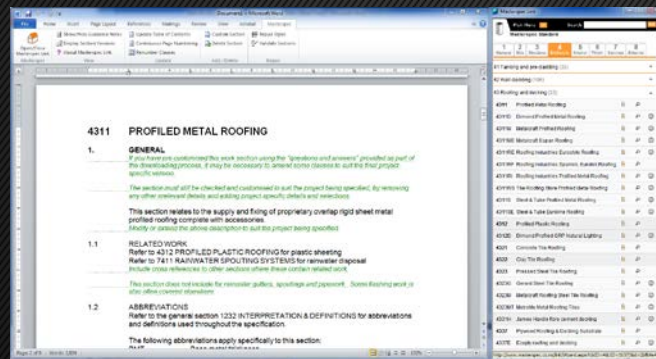
A Hub for Construction Information

Specifications provide us with a document for wide range of roles:

- Briefing
- A Design Record
- Demonstration of Compliance
- Cost Planning Tool
- Tender Document
- Contract Document
- Project Management Aid
- On site Manual
- Proof of intent
- Resource for Facilities Management



Specifications are delivered in more Efficient Method



MS Word

Web based Digital Format

Online Cloud

TIME

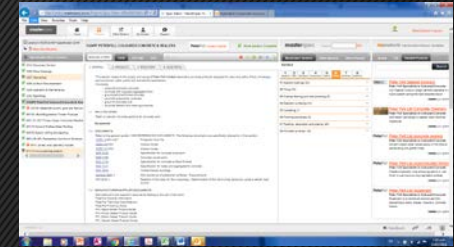
Specifications can learn from Drawings



Word Based Masters



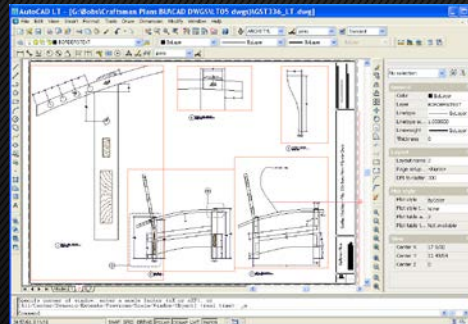
Digital Format



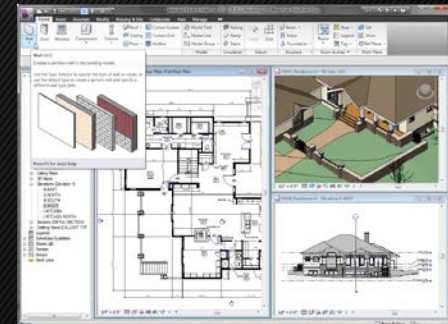
Online Cloud



Manual Drawing



2d CAD

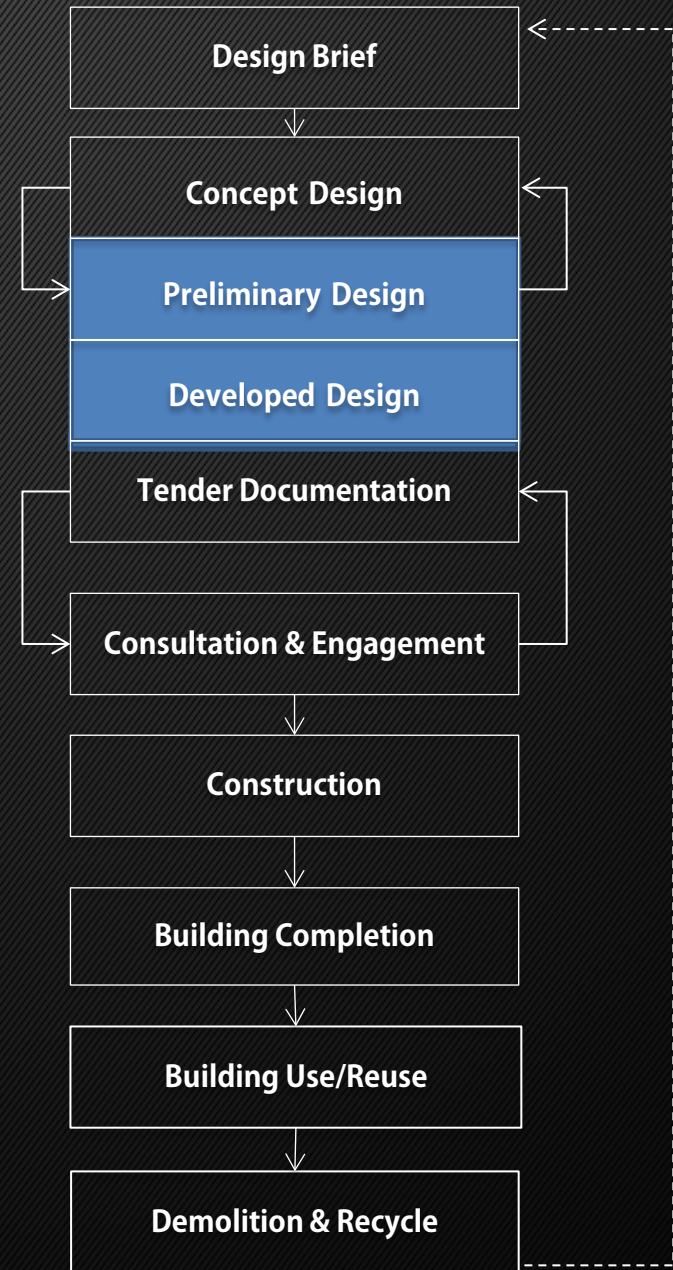


BIM Modelling

Specifications Online can be much more

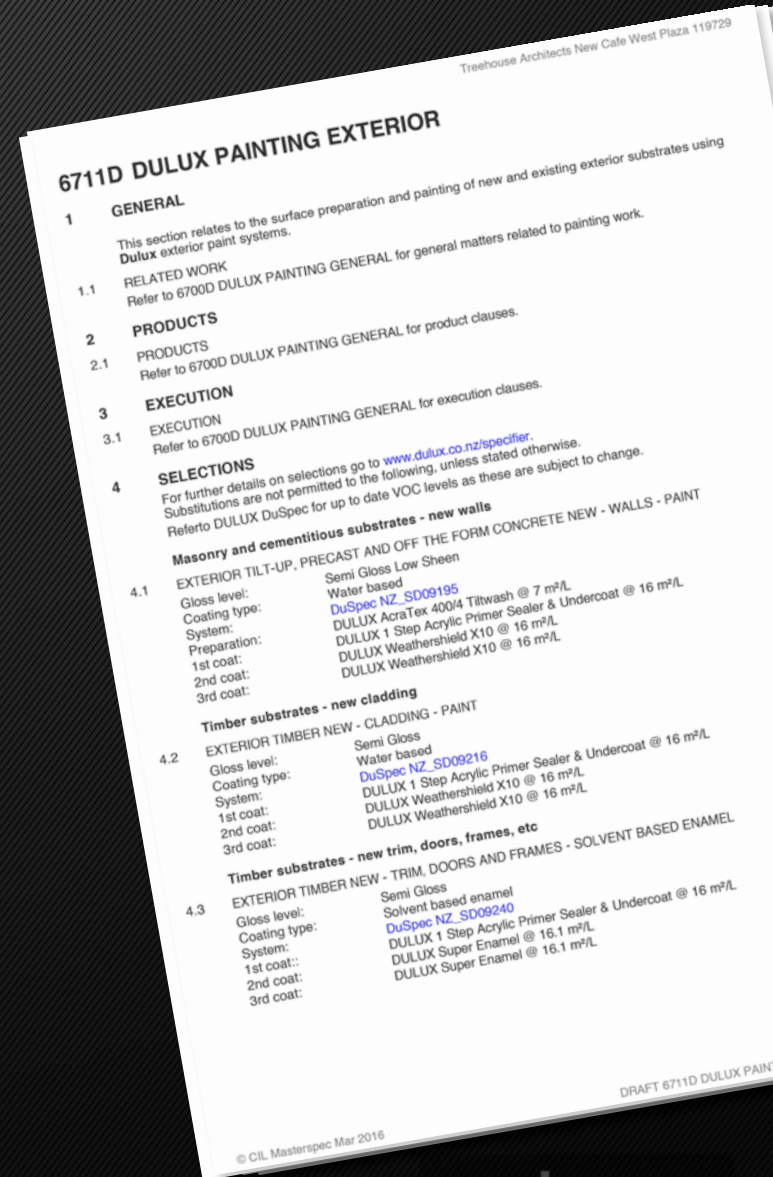
- Today Specification platforms are more data rich environment
- They more often than not - holds other useful data for the design process
- This can be mapped and linked to other tools
- That data can be used to drive and link parameters through out the whole building process

The Design & Building Process



Online Specifications provide us with more Opportunity

- Much like drawing information has with BIM
- Pushing information from the spec
- Populating other parts of the design process with construction information



Our Online Platform is Data Rich



Recent Advances we have made due to the Masterspec Online Platform

- Faster & more accurate specs for designers
- Office/project masters – Customisation, Constancy
- Automation of Schedule Clauses - Accuracy
- Automated Updates - Accuracy
- Richer Product Information - More informed
- Allows for Partner Interaction - Expertise

Faster Accurate Specs

The screenshot displays the masterspec website interface. The top navigation bar includes 'masterspec Systems', 'Office Masters', and 'Office Projects'. A search bar is located next to the 'GO' button. Below the navigation bar, a banner indicates 'Masterspec updates available' with a 'more...' link. The main content area is divided into two columns. The left column, titled 'Create a NEW Office Master', lists various templates such as '2016 New Residential General Sections', 'MIGHTY RIVER POWER P&G's', 'MRP Electrical', 'Resene', 'Schedule Master', 'Scope Water', and several 'Treehouse OM' templates. The right column, titled 'New Wing - West Plaza - Main Specification', displays a list of specifications with their respective codes and descriptions. Each specification entry has a 'ow detail' link to its right. The bottom of the page features a footer with 'Home | Projects | Office Masters | My Details | Support' and 'VERSION 1.0'. The Windows taskbar at the bottom shows various application icons, including the Start button, File Explorer, and several office applications.

masterspec Search GO

Masterspec Systems Office Masters Office Projects

⚠ Masterspec updates available [more...](#)

Create a NEW Office Master.

Create a new specification template that is specially tailored to suit your business.

- 2016 New Residential General Sections (Office Master)
- MIGHTY RIVER POWER P&G's (Office Master)
- MRP Electrical (Office Master)
- Resene (Office Master)
- Schedule Master (Office Master)
- Scope Water (Office Master)
- Treehouse OM Brick Earth (Office Master)
- Treehouse OM Commercial Warehouse (Office Master)
- Treehouse OM Landscaping (Office Master)
- Treehouse OM P&G Commercial (Office Master)
- Treehouse OM P&G Sections (Office Master)
- Treehouse Plywood linings (Office Master)

New Wing - West Plaza - Main Specification

1013	Document Control	ow detail
1220	Project	ow detail
1222	Project Personnel	ow detail
1231	Contract	ow detail
⚠ 1233	Referenced documents	ow detail
1235	Shop Drawings	ow detail
1237	Warranties	ow detail
1238	As Built Documentation	ow detail
1239	Operation & Maintenance	ow detail
⚠ 1260	Project Management	ow detail
3101	Concrete Work - Basic	ow detail
3102	Concrete Work - Standard	ow detail
⚠ 3122	Sprayed Concrete	ow detail
3124A	Aquron 2000 Cure & Seal Moisture Protection	ow detail
3129	Concrete production	ow detail
3151C	ComFlor composite floor system	ow detail
3181CC	Canzao Concrete Accessories	ow detail
3321F	Firth concrete masonry	ow detail
⚠ 3411	Structural Steelwork	ow detail
4131EB	Equus De Boer Debase Tanking Membrane	ow detail
4221TH	Timspec CertClad Horizontal Weatherboards	ow detail
4241D	Dimond Profiled Cladding	ow detail
4251A	Alucobond aluminium composite cladding	ow detail
4311D	Dimond Profiled Metal Roofing	ow detail
4521AR	APL Residential Aluminium Windows & Doors	ow detail

Home | Projects | Office Masters | My Details | Support

VERSION 1.0

Feedback

1:20 a.m.
15/03/2016

masterspec

Automation of Schedule Clauses

masterspec

Home Projects Office Masters My Details Support

Jeremy's WORKSHOP Specification 2016

Main Specification

Specification Work Sections

- 1013 Document Control
- 1235 Shop Drawings
- 1237 Warranties
- 1238 As Built Documentation
- 1239 Operation & Maintenance
- 2242 Backfilling

1237 WARRANTIES

Finished editing? Set to Complete

MANAGE & PRINT VIEW OUTLINE EDIT SAVE

1. GENERAL 2. SELECTIONS 3. SCHEDULES

Schedule of work section warranties

For Next Gen subscribers this clause will display an auto populated schedule listing all work sections containing any clause headings with the words "WARRANTY", "WARRANTY - MANUFACTURER/SUPPLIER" and/or "WARRANTY - INSTALLER/APPLICATOR". This schedule will update automatically to reflect additions or deletions of complete work sections containing these words in their clause headings, and will update automatically to reflect the deletion (or addition) of clause headings containing these words from within a work section. Other than the methods as

3.1 SCHEDULE OF WORK SECTION WARRANTIES *system note -*

The following work sections have warranty and guarantee requirements, refer to these sections for details:

4311D	Dimond Profiled Metal Roofing
4521AR	APL Residential Aluminium Windows & Doors

Schedule of additional items

3.2 SCHEDULE OF ADDITIONAL ITEMS

The following documents have warranty and guarantee requirements, refer to these documents for details:

Home | Projects | Office Masters | My Details | Support

Project List | Create a New Spec | Clients

© Copyright Construction Information Limited. Private Information collected for this website is governed by our [Privacy Policy](#)

Automated Updates

QUICK VIEW

masterspec

Back to Specification Editor Page
Last Completed: 17/02/2016

←

My Specification

The actions below are instantly applied to this.

RELATED WORK

Refer to ~ for ~.
Include cross references to other sections where these contain related work.
Refer to 6745 PROTECTIVE COATINGS - STEELWORK for any specialist paint finishes. For any standard finishes refer to painting sections.

Documents

IDENTICAL

IDENTICAL

Masterspec Work Section

Marked-up to show differences with your Specification.
Last Published: 01/03/2016

KEY

RELATED WORK

Refer to ~ for ~.
Include cross references to other sections where these contain related work.
Refer to 6745 PROTECTIVE COATINGS - STEELWORK for any specialist paint finishes. For any standard finishes refer to painting sections.

Documents

Documents

DOCUMENTS

Refer to the general section 1233 REFERENCED DOCUMENTS. The following documents are specifically referred to in this section:
[NZBC B1/AS1](#) Structures
[NZBC B1/VM1](#) Structure
[NZBC B2/AS1](#) Durability
[NZBC F5/AS1](#) Construction and demolition hazards
[AS/NZS 1252](#) High strength steel bolts with associated nuts and washers for structural engineering
[NZS 3404.1:1997](#) Steel Structures Standard
[AS/NZS 4600](#) Cold formed steel structures
[AS/NZS 4680](#) Hot-dip galvanized (zinc) coatings on fabricated ferrous articles
[AS/NZS ISO 9001](#) Quality systems - Requirements
[AS 1111.1](#) ISO metric hexagon bolts and screws - Product grade C - Bolts
[AS 1112.1](#) ISO metric hexagon nuts - Style 1 - Product grades A and B
[AS 1397](#) Continuous hot-dip metallic coated steel sheet and strip - Coatings of zinc and zinc alloyed with aluminium and magnesium

[AS 1897](#) Electroplated coatings on threaded components (metric coarse series)
[AS 3828](#) Guidelines for the erection of building steelwork
[WorkSafe NZ](#) [Guidelines for the provision of facilities and general safety in the construction industry](#)
This section uses [NZS 3404.1:1997](#) which is cited in [NZBC B1/VM1](#). As [NZS 3404.1:2009](#) is not cited at time of writing, it is not used in this section. If you use [NZS 3404.1:2009](#) as an alternative solution modify this section accordingly, possible modifications for consideration have been included in some clause guidance notes. Refer to [NZS 3404.1:2009, Appendix B](#) for further specific clause relationships to [NZS 3404.1:1997](#).
Delete from the DOCUMENTS clause any document not cited. List any additional cited documents.
The following are related documents and if referred to in the work section need to be added to the list of DOCUMENTS.
[AS/NZS 1170](#) Structural steel actions (set)
[NZS 3404.2:1997](#) Steel structures Standard - Commentary to the Steel structures Standard

IDENTICAL

IDENTICAL

Documents

DOCUMENTS

Refer to the general section 1233 REFERENCED DOCUMENTS. The following documents are specifically referred to in this section:
[NZBC B1/AS1](#) Structures
[NZBC B1/VM1](#) Structure
[NZBC B2/AS1](#) Durability
[NZBC F5/AS1](#) Construction and demolition hazards
[AS/NZS 1252](#) High strength steel bolts with associated nuts and washers for structural engineering
[NZS 3404.1:1997](#) Steel Structures Standard
[AS/NZS 4600](#) Cold formed steel structures
[AS/NZS 4680](#) Hot-dip galvanized (zinc) coatings on fabricated ferrous articles
[AS/NZS ISO 9001](#) Quality systems - Requirements
[AS 1111.1](#) ISO metric hexagon bolts and screws - Product grade C - Bolts
[AS 1112.1](#) ISO metric hexagon nuts - Style 1 - Product grades A and B
[AS 1397](#) Continuous hot-dip metallic coated steel sheet and strip - Coatings of zinc and zinc alloyed with aluminium and magnesium

[AS 1897](#) Electroplated coatings on threaded components (metric coarse series)
[AS 3828](#) Guidelines for the erection of building steelwork
[WorkSafe NZ](#) [Guidelines for the provision of facilities and general safety in the construction industry](#)
This section uses [NZS 3404.1:1997](#) which is cited in [NZBC B1/VM1](#). As [NZS 3404.1:2009](#) is not cited at time of writing, it is not used in this section. If you use [NZS 3404.1:2009](#) as an alternative solution modify this section accordingly, possible modifications for consideration have been included in some clause guidance notes. Refer to [NZS 3404.1:2009, Appendix B](#) for further specific clause relationships to [NZS 3404.1:1997](#).
Delete from the DOCUMENTS clause any document not cited. List any additional cited documents.
The following are related documents and if referred to in the work section need to be added to the list of DOCUMENTS.
[AS/NZS 1170](#) Structural steel actions (set)
[NZS 3404.2:1997](#) Steel structures Standard - Commentary to the Steel structures Standard

IDENTICAL

IDENTICAL

Company: Metalcraft Roofing
Web: [www.metalcraftroofing.co.nz](#)
Metalcraft Structural steel action details are available through the web site

[NZBC B2/AS1](#) Durability
[NZBC F5/AS1](#) Construction and demolition hazards
[AS/NZS 1252](#) High strength steel bolts with associated nuts and washers for structural engineering
[NZS 3404.1:1997](#) Steel Structures Standard
[AS/NZS 4600](#) Cold formed steel structures
[AS/NZS 4680](#) Hot-dip galvanized (zinc) coatings on fabricated ferrous articles
[AS/NZS ISO 9001](#) Quality systems - Requirements
[AS 1111.1](#) ISO metric hexagon bolts and screws - Product grade C - Bolts

Company: Metalcraft Roofing
Web: [www.metalcraftroofing.co.nz](#)
Metalcraft Structural steel action details are available through the web site

[NZBC B2/AS1](#) Durability
[NZBC F5/AS1](#) Construction and demolition hazards
[AS/NZS 1252](#) High strength steel bolts with associated nuts and washers for structural engineering
[NZS 3404.1:1997](#) Steel Structures Standard
[AS/NZS 4600](#) Cold formed steel structures
[AS/NZS 4680](#) Hot-dip galvanized (zinc) coatings on fabricated ferrous articles
[AS/NZS ISO 9001](#) Quality systems - Requirements
[AS 1111.1](#) ISO metric hexagon bolts and screws - Product grade C - Bolts

Richer Product Information

http://online.masterspec.co.nz/Projects/Spec-Editor-i198e3620-891b Spec Editor

File Edit View Favorites Tools Help

masterspec Home Projects Office Masters My Details Support

Jeremy's WORKSHOP Specification 2016
Main Specification

Specification Work Sections

- 1013 Document Control
- 1235 Shop Drawings
- 1237 Warranties
- 1238 As Built Documentation
- 1239 Operation & Maintenance
- 2242 Backfilling
- 3124PF PeterFell Coloured Concrete & Sealer
- 3411M Metalcraft purlins, girts and floor joists
- 3811E I-Built Engineered Timber Products
- 4221UH JSC Timber Cedar Horizontal Weatherboards
- 4311D Dimond Profiled Metal Roofing
- 4337E Ecoply roofing and decking
- 4521AR APL Residential Aluminium Windows
- 5511 Joinery and cabinetry fixtures
- 6711D Dulux painting exterior

4311D DIMOND PROFILED METAL ROOFING

MANAGE & PRINT VIEW OUTLINE EDIT SAVE

1. GENERAL 2. PRODUCTS 3. EXECUTION 4. SELECTION

This section relates to the supply and fixing of Dimond profiled roof

- Metal roofing
- Duradtek roofing
- accessories

1.1 RELATED WORK
Refer to 4161 UNDERLAYS, FOIL AND DPC for underlays, foils and Refer to ~ for ~

1.2 ABBREVIATIONS
The following abbreviations are used throughout this part of the specification

BMT	Base metal thickness
NZMRM	New Zealand Metal Roofing Method
MS	Modified silicone

Documents

1.3 SCHEDULE OF WORK SECTION WARRANTIES
The following work sections have warranty and guarantee requirements

4311D	Dimond Profiled Metal Roofing
4521AR	APL Residential Aluminium Windows & Doors

1.4 DOCUMENTS
Refer to the general section 1233 REFERENCED DOCUMENTS. T

NZBC E2/AS1	External Moisture
AS/NZS 1170.2	Structural design actions - Wind
AS 1397	Continuous hot-dip metallic coating and magnesium
AS 3568	Self-drilling screws for the built
NZS 3604	Timber-framed buildings
ISO 9223	Corrosion of metals and alloys
NZMRM CoP	NZ Metal Roof and Wall Cladding

miproducts THE NATIONAL PRODUCT DATABASE

Search CBI Related Products

Search

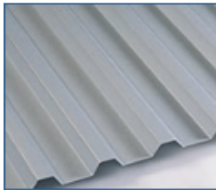
Back to results

Detail Contact

Dimond Dimond BB900

High rib trapezoidal used as roofing and cladding

CONTACT



Product Description

38 mm High rib trapezoidal profile.

BB 900 has been designed with strong ribs that resist buckling under concentrated loads reducing the chance of damage on roofs where foot traffic is common. Equally useful as a wall cladding, Brownbuilt 900's aesthetic appeal can be even further enhanced by inverting the profile to create Brownbuilt 900 Reverse Run.

Can be laid down to 3 degrees roof pitch.

View more
<http://www.dimond.co.nz/Roofing-Cladding/Brownbuilt-900-1186.htm>

Back to results miproducts website

Mark Fairbairn | Log out

miproducts THE NATIONAL PRODUCT DATABASE

Search CBI Related Products

Search

Office Masters Office Projects

5 Interior 6 Finish 7 Services 8 External

Interior (5)

Finish (45)

Services (45)

External (45)

Dimond DP955 profile

Dimond

High rib pierced fixed profile with excellent spanning capabilities. Best under foot traffic loads

Dimond Durolite

Dimond

Natural lighting translucent sheeting to match metal roof and wall profiles

Dimond Dimondek 630

Dimond

High rib decking profile run on site in lengths up to 100m long.

Dimond BB900

Dimond

High rib trapezoidal used as roofing and cladding

Dimond Dimondek 400

Dimond

Tough section roofing and cladding profile using a concealed clip system

Allows for Partner Interaction

The image shows a screenshot of the masterspec website interface and a 'Contact Supplier' modal window.

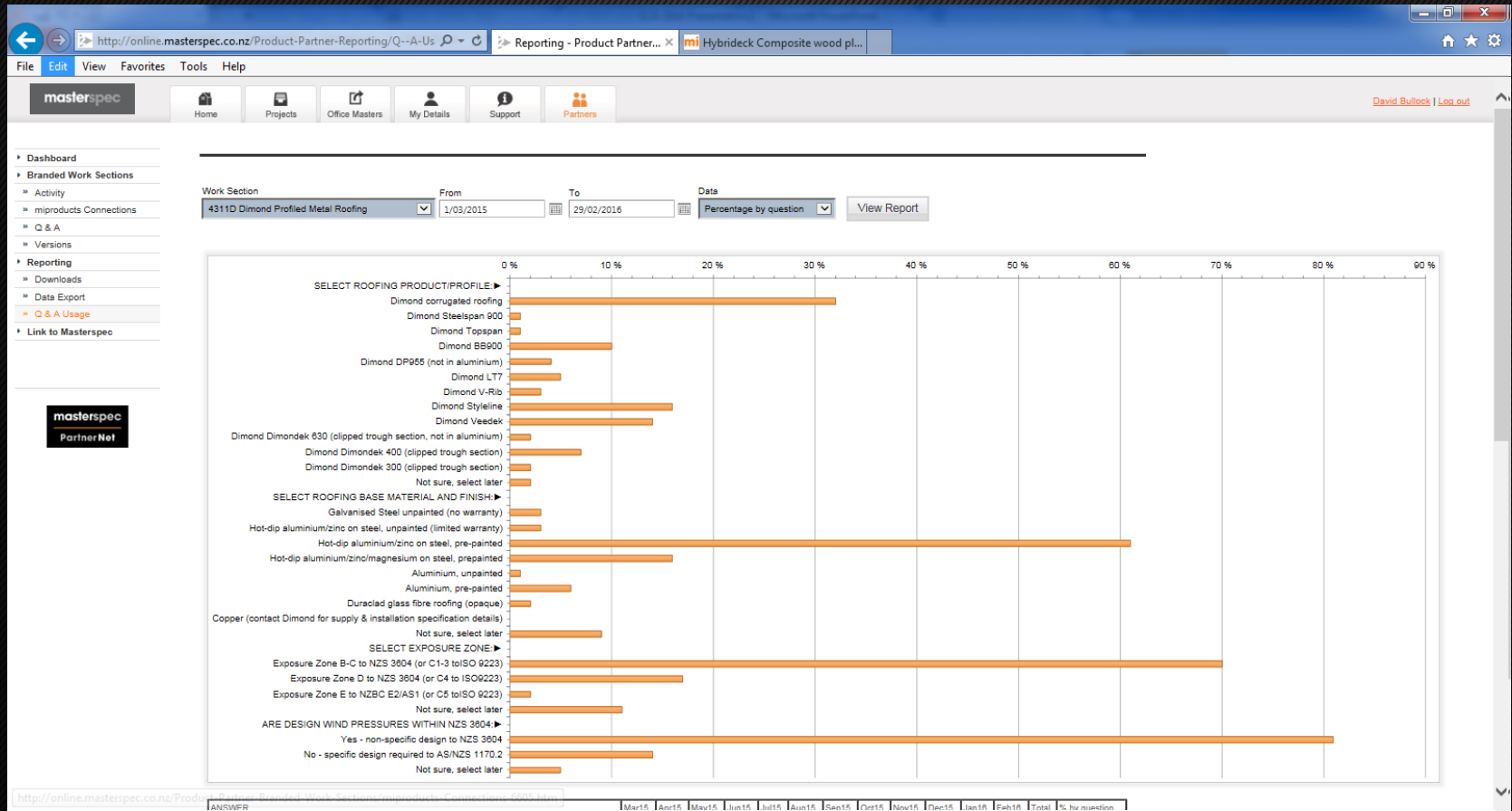
Website Interface:

- URL: <http://online.masterspec.co.nz/Projects/Spec-Editor-i198e3620-891b>
- Navigation: File, Edit, View, Favorites, Tools, Help
- Project: Jeremy's WORKSHOP Specification 2016
- Section: 4311D DIMOND PROFILED METAL ROOFING
- Left sidebar: List of specification sections (e.g., 1013 Document Control, 1235 Shop Drawings, 1237 Warranties, 1238 As Built Documentation, 1239 Operation & Maintenance, 2242 Backfilling, 3124PF PeterFell Coloured Concrete & Sealer, 3411M Metalcraft purlins, girts and floor joists, 3811E I-Built Engineered Timber Products, 4221JH JSC Timber Cedar Horizontal Weathering, 4311D Dimond Profiled Metal Roofing, 4337E Ecoply roofing and decking, 4521AR APL Residential Aluminium Windows, 5511 Joinery and cabinetry fixtures, 6711D Dulux painting exterior).
- Right pane: Details for 4311D DIMOND PROFILED METAL ROOFING, including sections 1. GENERAL, 1.1 RELATED WORK, 1.2 ABBREVIATIONS, 1.3 SCHEDULE OF WORK SECTION WARRANTIES, and 1.4 DOCUMENTS.

Contact Supplier Modal Window:

- Title: Contact Supplier
- Send To: Dimond
- Send From: Mark Fairbairn, ☎ 09 6317055, Treehouse Architects, ☎ 09 6317044
- Email Content: A PDF version of this Work Section will be attached and sent to the supplier.
- PDF icon and text: PDF
- Project: Jeremy's WORKSHOP Specification 2016
- Specification: Main Specification
- Work Section: 4311D Dimond Profiled Metal Roofing
- Enquiry Details:
 - ☒ Review Work Section
 - ☐ Price request
 - ☒ Product availability or lead times
 - ☐ Product Technical Statement (miproducts PTS)
- Subject: Request for Product Support
- Query: (Optional) Is this profile currently available in colour Gull Grey?
- Confirm: Submit Request, Cancel

Partner Reporting Live



From Spec to Drawing: MasterKey

The screenshot illustrates the MasterKey software interface, which connects specifications to drawings. The interface is divided into several panes:

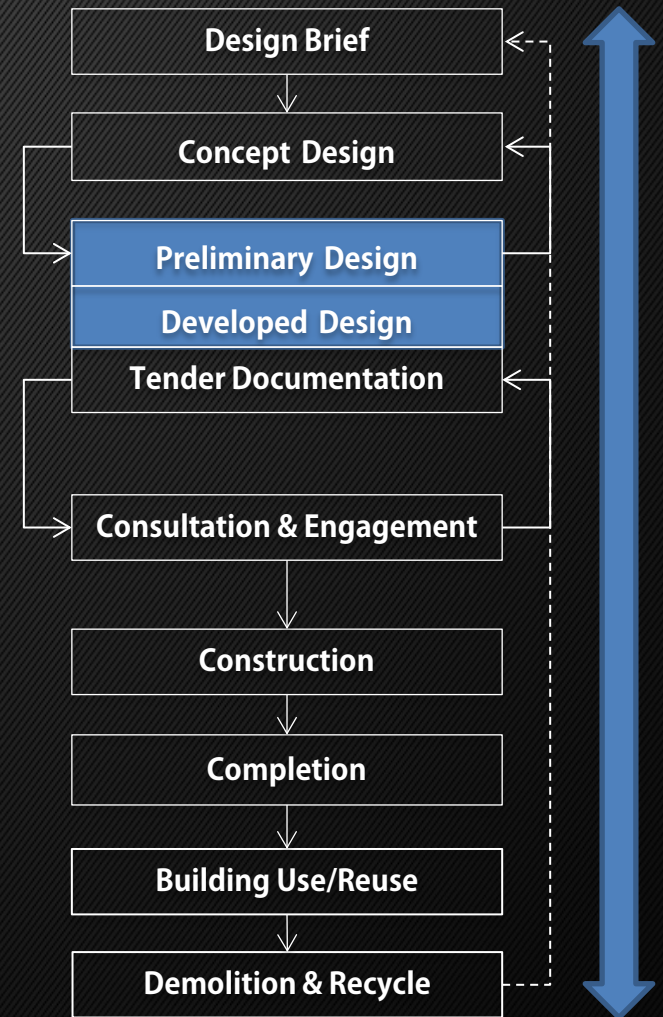
- Left Pane (Project Tree):** Lists project components. The selected item is **4161M Tekton Weatherization System**.
- Middle Pane (Specification):** Displays the specification for **4.1 TEKTON PROTECTO WRAP**. The details are as follows:

4.1 TEKTON PROTECTO WRAP	
Location:	All external walls
Wrap/underlay:	Tekton® Seam Tape
Seam tape:	Tekton® Seam Tape
Penetration seal:	TRADE-SEAL
Sill tape/system:	Protecto Wrap One Piece Sill Tape
- Right Pane (Drawing):** Shows a cross-section drawing of a wall/roof connection. A callout points to the **4161M_4.1 - TEKTON PROTECTO WRAP** layer. Other layers shown include:
 - 4711_4.2 - THERMAL BLANKET
 - 4223P_4.1 - CEDARTECH PLYWOOD CLADDING 12 mm
 - 4711_4.1 - THERMAL INSULATING PADS
 - 5113G_4.1 - GIB® STANDARD 13 mm WALLS

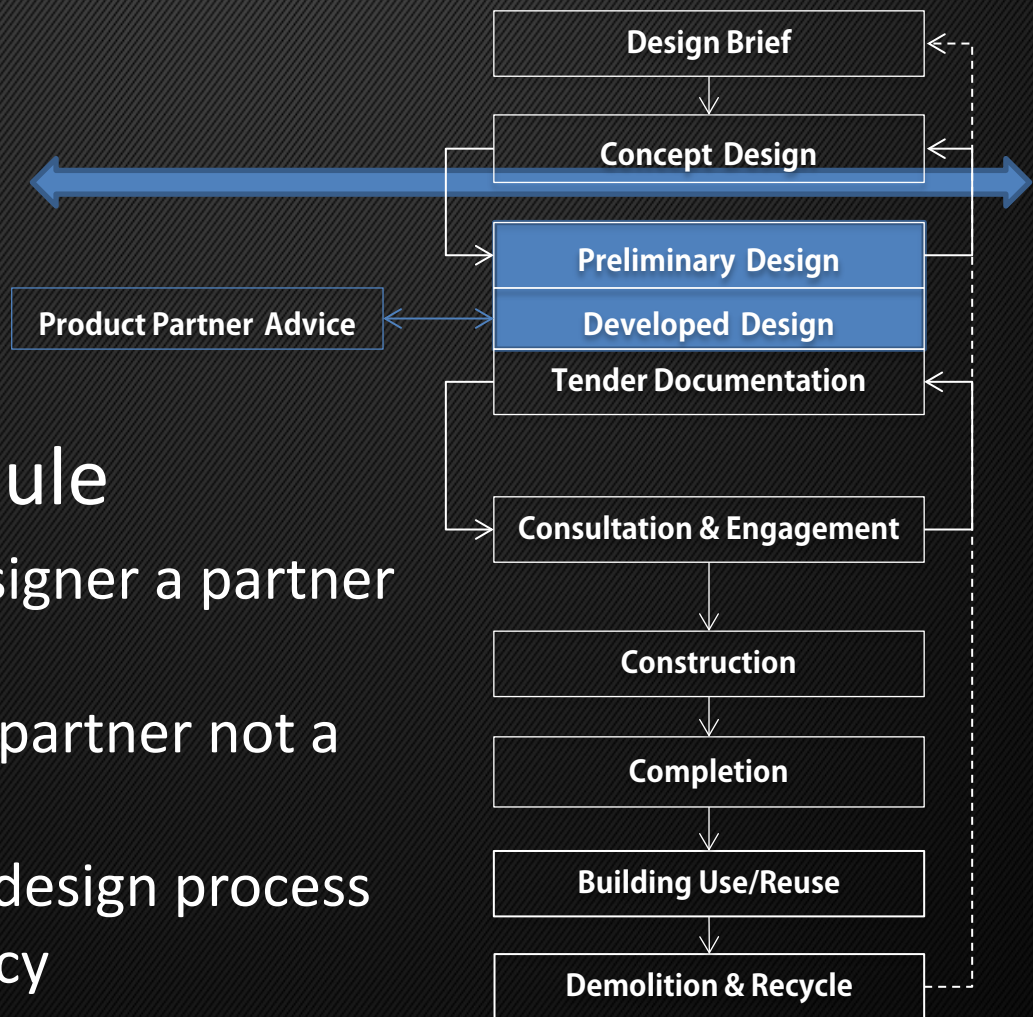
A blue arrow indicates the flow from the specification in the middle pane to the corresponding layer in the drawing on the right.

Online specifications provides us with new Opportunities

- A platform or HUB to push information from the spec to populate other parts of the design and construction process



Construction Information HUBs - Future Opportunities

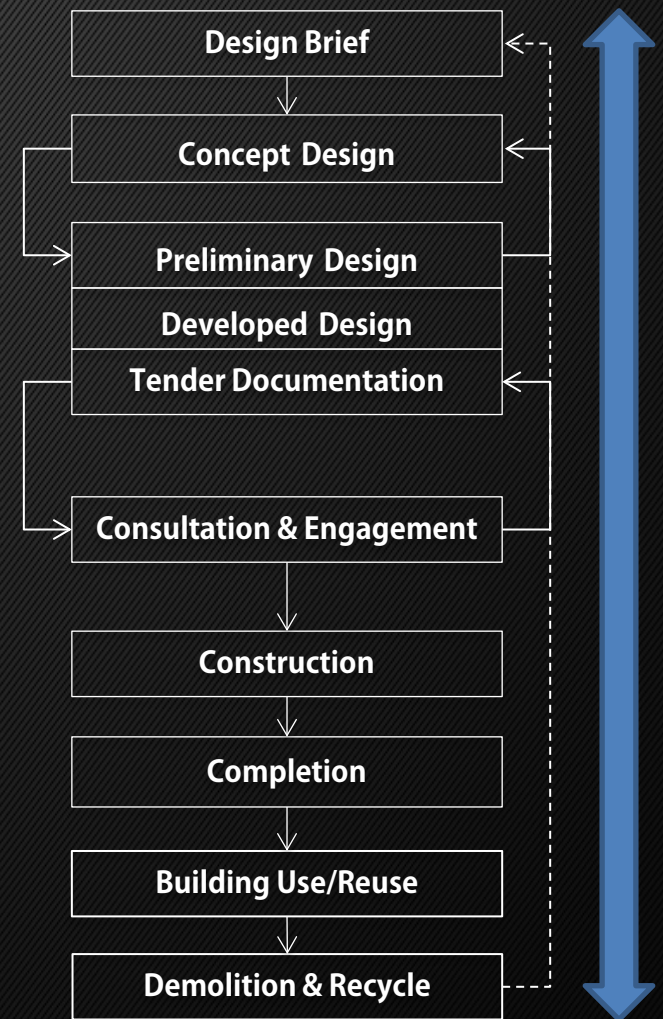


New Partner Module

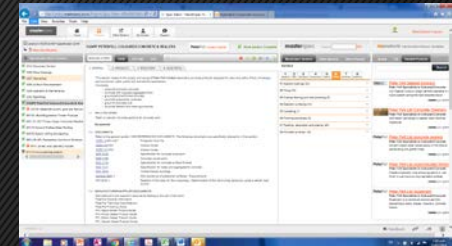
- On request from the designer a partner can offer advice
- Designers are looking for a partner not a supplier
- Expert advice helps the design process and should help efficiency

Construction Information HUBs - Future Opportunities

- Creation of project keynotes attached to clauses from cloud based specs
- MasterKey is already making design teams to start the spec earlier
- Preliminary Specifications
- Maintenance Documentation
- Linking to National BIM Library Objects



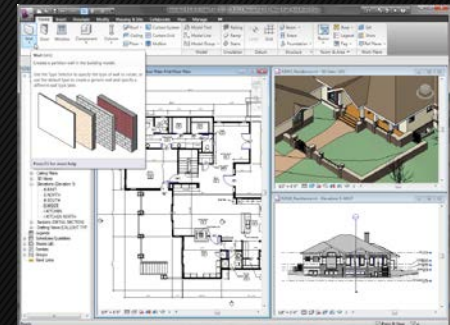
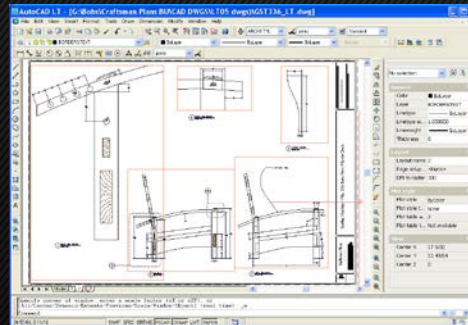
CI HUB's can do for Specs what BIM has done for Geometry – Improve relevance



Word Based Masters

Digital Format

Online Cloud



Manual Drawing

2d CAD

BIM Modelling

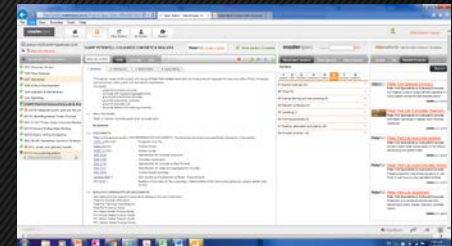
QUESTIONS?



Word Based Masters



Digital Format



Online Cloud