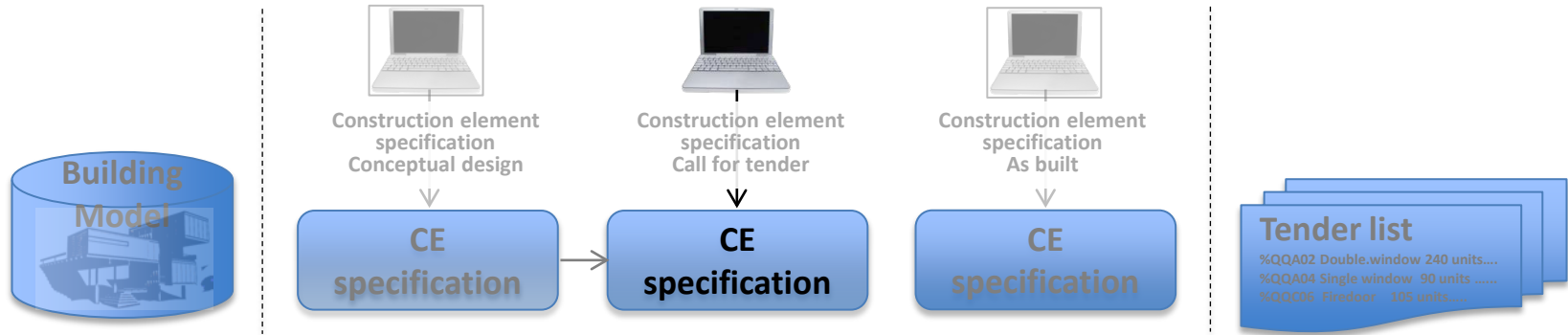


# Process of the analogue Construction Element Specification - today

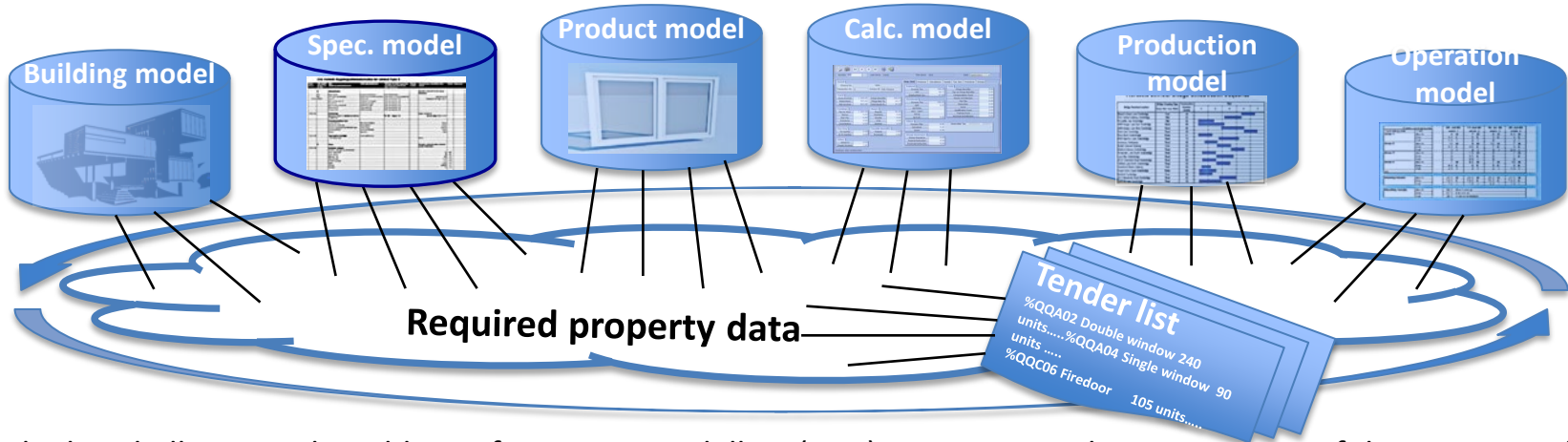


Today consultants (specifiers) for the Call for Tender primarily write the specifications for the Tender in a Word-paradigm or in a database and send to other parties in pdf.

There is no direct or only an analogue link to the building models or other tools or i.e. the Tender list. There is normally no possibility for reuse of data by other participating parties.

Few consultants have also tried to use the specification tool in the conceptual design phase.

# Construction Element Specifications in relation to BIM



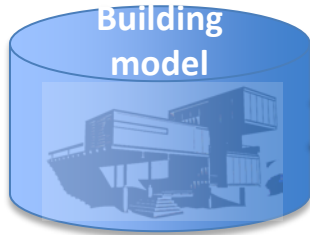
The big challenge with Building Information Modelling (BIM) is to support the cooperation of the parties and to reuse and use of data created by the previous link in all building phases – that is in the total life cycle of the building work.

This challenge is only solved if all parties have access to the tool or its data at a given time in the process. The possibility to share specification models and their data in the same way as the construction models and other models.

This means that property data in one tool can be taken out and reused in other tools and listed as information in documents. This creates new requirements for the specification tool regarding structure, function and form.

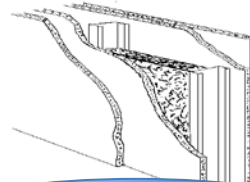
# CE-properties in the Building model + Specification model

## Building model-CE

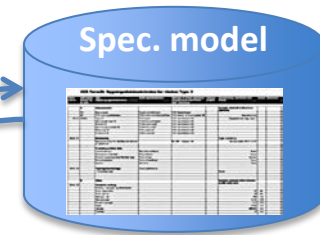


Properties  
References  
Metadata

Example: Wall Gypsum board




## Specifications-CE



Standard  
CE-specifications  
Properties  
References  
Metadata



### Geometric data

- Form: 
- Length: 8500 mm
- Height: 2500 mm
- Thickness: 120 mm
- Area: 20,50 m<sup>2</sup>

### Administrative data

- CCS prod.ID: #AD
- CCS type-ID: %AD(AAEU:12)
- Type: TG12 gypsum wall
- Measure rule: CCS M\_ULM11
- IfcObject: IfcWall
- Work sect.: B1.290 Framework construction

Energy  
simulation

Quantity  
list

%AD(AAEU:12)

Tender  
list

Base of  
Production

Construction  
element  
specification

### Performance data

- Fire rating: EI 120 A2-s1,d0
- Sound rating: 44 dB
- Load: 0 kN

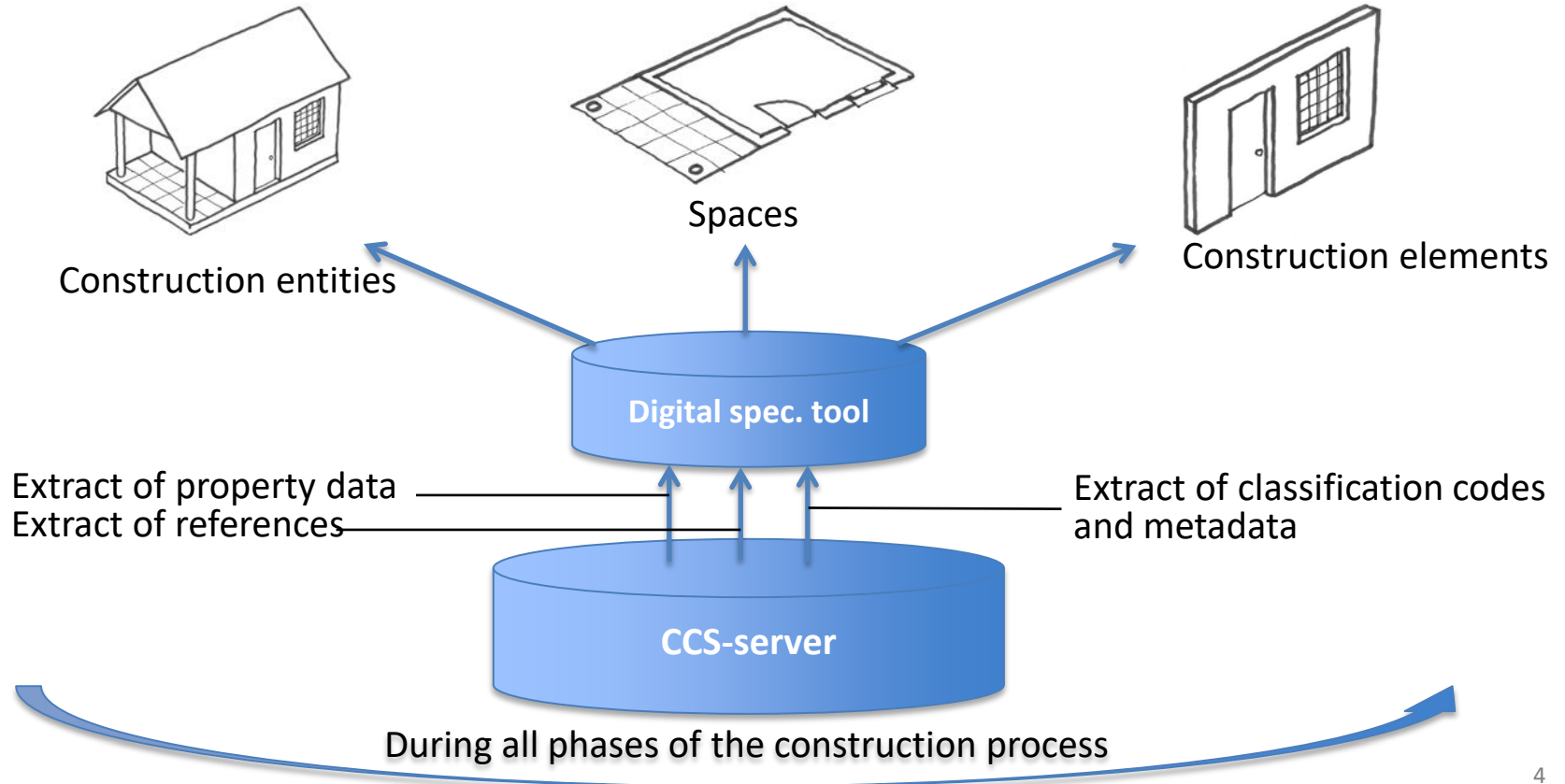
### Product data

- Layer: 2x2
- Edge: Cutted
- Quality level: Q3

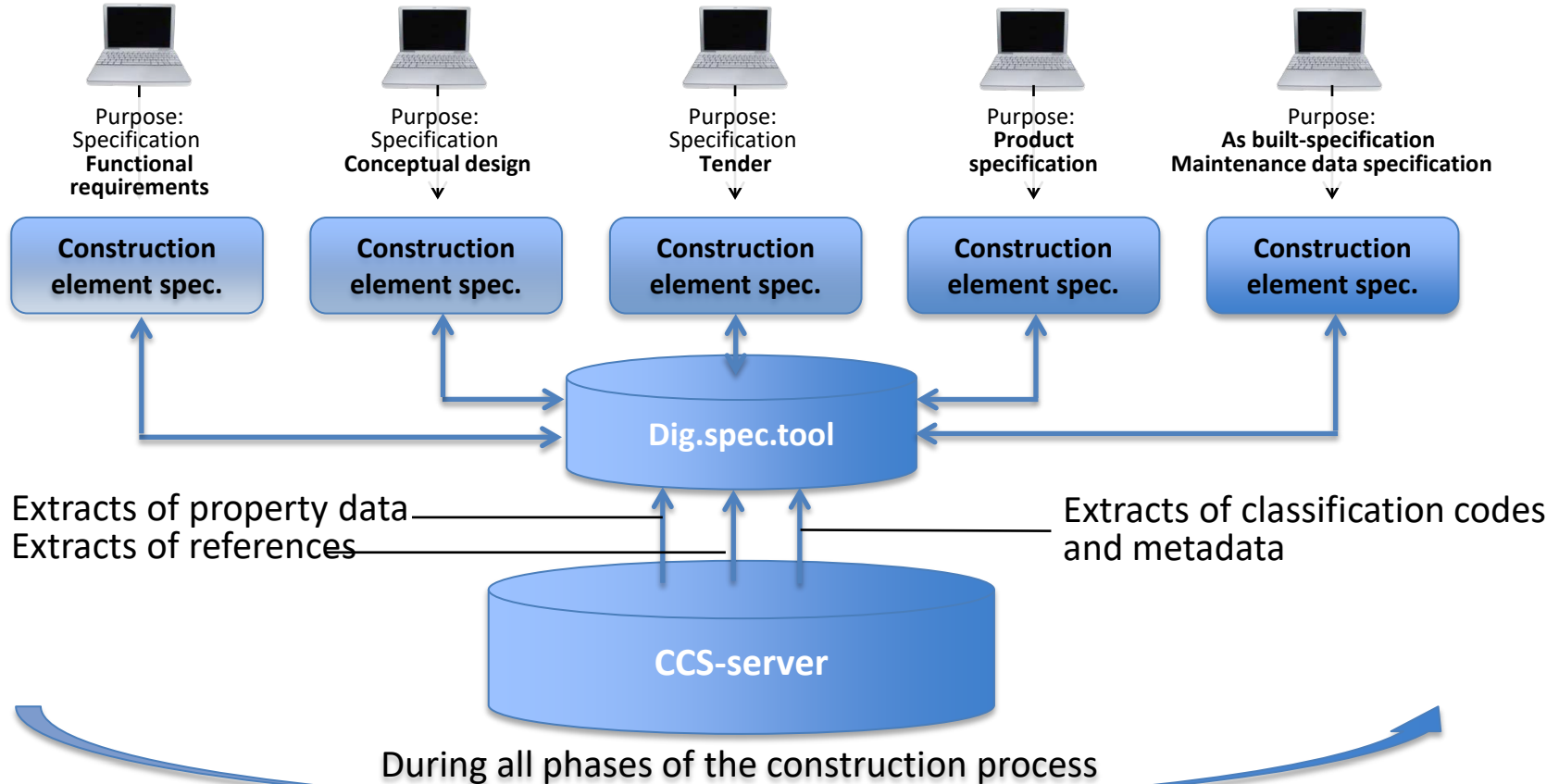
### Administrative data

- CCS prod.ID: #AD
- CCS type-ID: %AD(AAEU:12)
- Type: TG12 gypsum board
- IfcObject: IfcWall

# The Digital Specification Tool



# The digital BIM-specification for Construction Elements



## 4 questions for short comments



1. How do you create interoperability between the Building model, the Specification model and the Tender list?
2. Do your specification use written descriptions or descriptive property data or both?
3. Do you have user conflicts between building modellers and specifiers, e.g. about property data?
4. Do you have a tolerance management tool?